

Pitt Chronicle

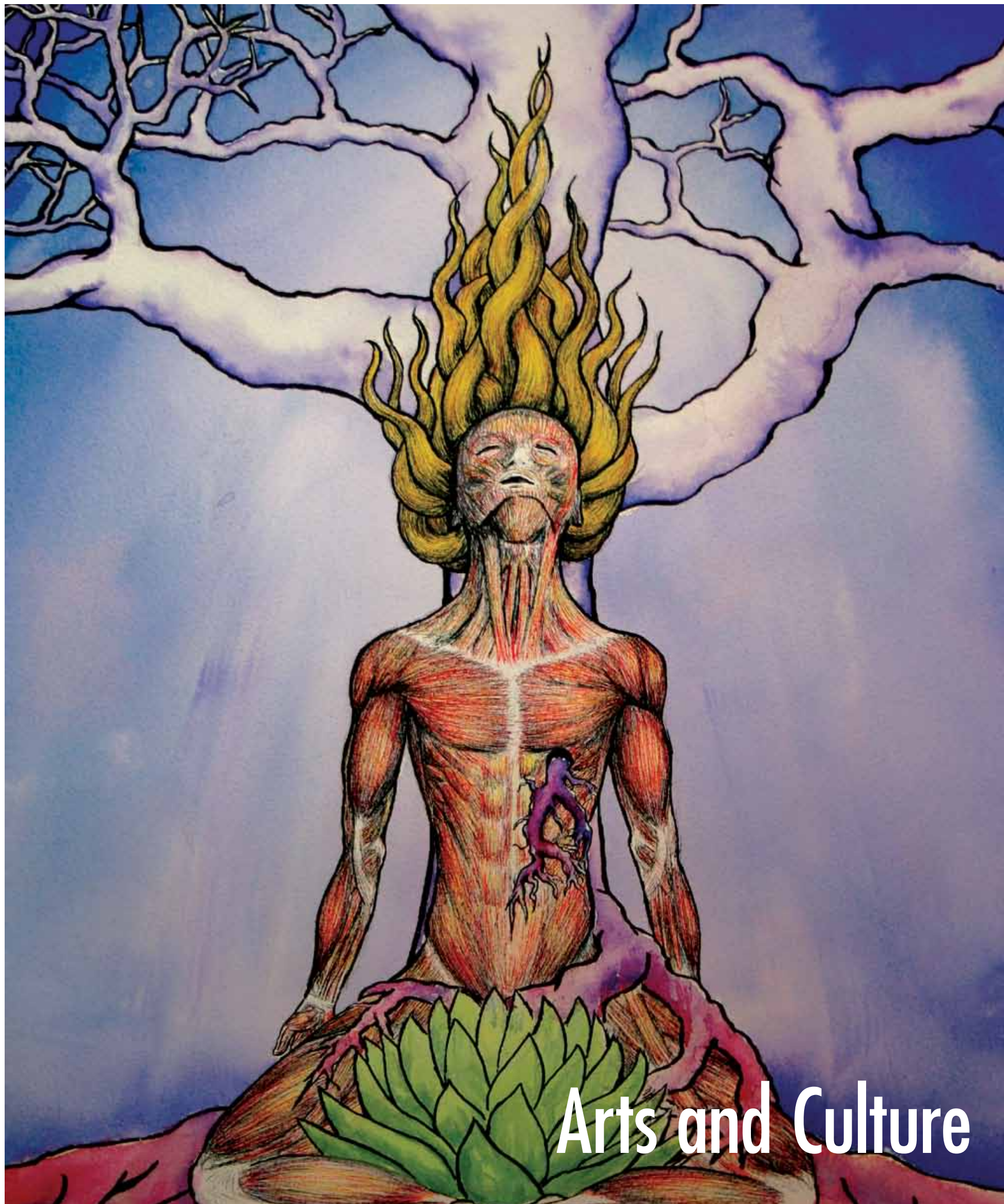
INSIDE

Ronald Linden is European Studies Center director..... 2

Exhibition from Pitt's Cook Ranch in Wyoming..... 3

Newspaper of the University of Pittsburgh

Volume XII • Number 3 • January 24, 2011



Arts and Culture

Ronald Linden Named Director of Pitt's European Studies Center, European Union Center of Excellence

By Amanda Leff Ritchie

Ronald Linden, professor of political science in the University of Pittsburgh's School of Arts and Sciences, has been named director of Pitt's European Studies Center and European Union Center of Excellence, effective immediately.

In announcing the appointment, Lawrence Feick, director of Pitt's University Center for International Studies (UCIS), said, "Ron is a superb scholar who has a deep understanding of both Western and Eastern Europe. He brings wide-ranging and critically important experience to this position, including his previous time in UCIS as a very successful director of Russian and Eastern European Studies.

Under Ron's leadership, our programs and activities in European studies and European Union studies will continue to flourish, and we will enhance our position as one of the highest-impact programs in the world focused on this critical region."

A Pitt faculty member since 1977, Linden has focused his research on Central and Southeastern Europe. He served as director of the Center for Russian and East European Studies from 1984 to 1989 and again from 1991 to 1998. From 1989 to 1991, he was director of research for Radio Free Europe in Munich, Germany, where his responsibilities included supervision of the publication of the weekly *Report on Eastern Europe*.

Linden is the author or editor of seven books on Central and Eastern Europe, with another forthcoming. He has also published more than 25 articles and chapters since 1979. His most recent publications include introductions for and editing of two special issues of *Problems of Post-Communism*, "The Meaning of 1989 and

After" (2009) and "The New Populism in Central and Southeast Europe" (2008). He is the author of "EU Accession and the Role of

International Actors," published in *Central and East European Politics: From Communism to Democracy* (Rowman & Littlefield Publishers, Inc., 2007), and "The Burden of Belonging: Romanian and Bulgarian Foreign Policy in the New Era" (*Journal of Balkan and Near Eastern Studies*, 2009). He was also a contributing author to the volume *The Berlin Wall: 20 Years Later*, published by the U.S. Department of State in 2009 to commemorate 20 years since the fall of the Berlin Wall.

During his career, Linden has served as a Fulbright Research Scholar and a Fulbright Distinguished Lecturer in Yugoslavia, a research scholar at the Kennan Institute for Advanced Russian Studies of the Woodrow Wilson International Center for Scholars, a senior fellow at the United States Institute of Peace under the Jennings

Randolph Program on International Peace, and a guest scholar of the East European Studies Program of the Woodrow Wilson International Center for Scholars.

In 2009-10, Linden was awarded a Transatlantic Academy Fellowship from the German Marshall Fund in Washington, D.C., where he was part of a project devoted to studying Turkish foreign policy. In addition, Linden has received research grants from the National Council for Eurasian and East European Research and from the International Research and Exchanges Board.

Linden received his PhD in politics from Princeton University in 1976, his master's degree in political science from the University of

Michigan in 1971, and his bachelor's degree in government from Boston University in 1969.



Ronald Linden

A Pitt faculty member since 1977, Linden has focused his research on Central and Southeastern Europe. He served as director of the Center for Russian and East European Studies from 1984 to 1989 and again from 1991 to 1998. From 1989 to 1991, he was director of research for Radio Free Europe in Munich, Germany, where his responsibilities included supervision of the publication of the weekly *Report on Eastern Europe*.

University of Pittsburgh's Confucius Institute Is an Institute of the Year

The Chinese Ministry of Education's Office of Chinese Language Council International (Hanban) named the Asian Studies Center's Confucius Institute (CI-Pitt) at the University of Pittsburgh one of 30 Confucius Institutes of the Year during the organization's annual conference, which was held in Beijing in December. Pitt is one of five North American institutes to receive the honor. This is the second time CI-Pitt has been recognized as one of the top Confucius Institutes since it was founded in May 2007.

CI-Pitt was the first Confucius Institute in Pennsylvania and is the largest Hanban-sponsored volunteer teacher program in the United States. Since its inception, CI-Pitt has experienced rapid growth—expanding from

Pitt is one of five North American institutes to receive the honor. This is the second time CI-Pitt has been recognized as one of the top Confucius Institutes since it was founded in May 2007.

two to 24 Chinese teachers, from three to 57 partner schools, and from 49 to about 2,100 students. In the past year alone, participation has increased 80 percent.

—By Amanda Leff Ritchie



Use of Donepezil With an Antidepressant Cuts Incidence of Dementia in Older Adults, Reynolds-Led Study Finds

By Megan Grote Quattrini

Donepezil, a medication used to treat dementia in Alzheimer's patients, was found to enhance language, memory, and executive functioning in older, depressed adults to a greater extent than was evident from the use of an antidepressant medication alone, according to a new study by the University of Pittsburgh School of Medicine. The study, published in the *Archives of General Psychiatry*, is the first to provide scientifically rigorous evidence to guide clinical practice in older adults with both major depression and mild cognitive impairment.

"Cognitive impairment is a core feature of depression in older adults and may foreshadow the development of dementia," said Charles F. Reynolds, lead author of the study and UPMC Endowed Chair of Geriatric Psychiatry. "While treatment of depression usually benefits associated cognitive impairment, it does not completely regulate cognitive impairment and may not delay the progression to dementia. So, even in remission, older adults with past depression may still show residual cognitive difficulties, such as slowing of information processing speed and impairments in executive or language function. Our study showed that by adding donepezil, cognition can be improved beyond that which is seen simply with the treatment of depression itself."

For the study, researchers compared 130 depressed adults older than 65—with 67 of the adults receiving donepezil, marketed under the trade name Aricept, and 63 receiving a placebo. The participants were followed for two years while researchers explored the effects of donepezil and placebo on five areas of neuropsychological functioning: speed of information processing, memory, language, visuospatial functioning, and executive functioning, or brain processes that are responsible for planning and abstract thinking.

The researchers noted two unexpected findings: Donepezil seemed to delay the progression of mild cognitive impairment to frank dementia, and the use of the drug was associated with somewhat higher recurrence rates of clinical depression episodes, Reynolds said. "So, there was both a benefit and a risk to adding donepezil to antidepressant pharmacotherapy in older adults. Fortunately, the majority of recurrent depressive episodes could be treated to remission."

Adding donepezil to maintenance antidepressant medication appears to be useful in the care of older, depressed patients with mild cognitive impairment but does not benefit those with normal cognition. The researchers stress that clinicians should

watch for early signs of any depressive relapse and treat as needed.

The study was supported in part by the National Institutes of Health and by the UPMC Endowed Chair in Geriatric Psychiatry. It was also a unique collaboration between the National Institute of Mental Health-sponsored Late Life Depression Center and UPMC's Alzheimer's Disease Research Center.

CORRECTION: In last week's story about BNY Mellon's \$1 million donation to Pitt for programs administered through the David Berg Center for Ethics and Leadership, the text should have stated that Center benefactor David Berg received his undergraduate education and first year of legal education at Pitt and that he earned his law degree from Harvard University.

PittChronicle

Newspaper of the University of Pittsburgh

PUBLISHER	Robert Hill
ASSOCIATE PUBLISHER	John Harvith
EXECUTIVE EDITOR	Linda K. Schmitmeyer
EDITOR	Jane-Ellen Robinet
ART DIRECTOR	Gary A. Cravener
STAFF WRITERS	Sharon S. Blake John Fedele Morgan Kelly Amanda Leff Ritchie Patricia Lomando White
CONTRIBUTING WRITERS	Annabelle Clippinger Megan Grote Quattrini
HAPPENINGS EDITOR	Baindu Saidu

The *Pitt Chronicle* is published throughout the year by University News and Magazines, University of Pittsburgh, 400 Craig Hall, Pittsburgh, PA 15260, Phone: 412-624-1033, Fax: 412-624-4895, E-mail: chron@pitt.edu Web: www.chronicle.pitt.edu

The University of Pittsburgh is an affirmative action, equal opportunity institution that does not discriminate upon any basis prohibited by law.

About the cover

Eternal Reverie by Ben Danforth is part of Pitt's *Studio Arts Wyoming Field Study Exhibition*, showing through Jan. 28 in the Frick Fine Arts Building's University Art Gallery. The show's four contributing artists are to be in the gallery at noon Jan. 26 to discuss their work. (Story on page 3.)

Arts and Culture

At Home on Pitt's Cook Ranch

UAG Exhibition Reveals Beauty, Artists' Introspection During a Journey Amid Dinosaur Bones



Together (Symbiosis) by Rob Hackett

By Sharon S. Blake

On a Wyoming ranch rich with dinosaur bones and never-ending vistas, four Pitt University Honors College students worked day and night on their art. Armed with the usual artistic tools—paint and paintbrushes, canvases, cameras—the young artists also relied on their strong arms to carry objects to create sculptures and their observant eyes to assess the new territory.

The students were participants in Pitt's second annual Wyoming Field Study, a 16-day, three-credit course offered in conjunction with the University Honors College. Their charge: to study and create art at Cook Ranch, the 4,700-acre parcel of land on the High Plains of Wyoming that was donated to Pitt five years ago. Accompanying them was Pitt art professor Delanie Jenkins, chair of the Department of Studio Arts.

Their time on the ranch produced a panoply of colorful and, at times, introspective paintings, drawings, and sculptures. Interestingly, not a dinosaur bone is to be found in any of them. Sixteen works from their summer 2010 adventure are on display in the *Studio Arts Wyoming Field Study Exhibition*, which runs through Jan. 28 in the Frick Fine Arts Building's University Art Gallery. All four students will be in the gallery at noon Jan. 26 to discuss their work.

Jenkins and the students drove across the country last June to Cook Ranch. They set up their studio in a nearby 1919-era bank building in Rock River; they roomed at a hotel with other Honors College students who were enrolled in an on-site paleontology course. The overlapping courses are part of the University's commitment to use the land for multidisciplinary education and research.

"It was fun to interact with the science students," said Ellyn Womelsdorf (A&S '10), who studied in Wyoming as a postbaccalaureate art student. "They learned from us, and we learned from them," she added, saying that the science students would pop into the studio to see the artists' work, and vice versa.

The Cook Ranch was rich with inspiration, the young artists said. Rob Hackett, who will graduate this December, hiked to the top of Medicine Bow Peak and took seven photographs of the sweeping vistas. He then "stitched" them together to create a wide panorama that is part of the exhibition.

Womelsdorf, meanwhile, found inspiration in a tiny mosquito, from the swarms that would cling to the studio's screen door at night. She drew one mosquito against a red backdrop created from a mixture of waterproof and acrylic ink. She poured the ink onto the paper, then dripped denatured alcohol on the surface,

creating a kind of mottled tie-dyed effect. Similarly, additional pieces with blue, green, or yellow backgrounds feature other Western iconography—a snow fence, windmills, and a pronghorn antelope.

Nickolas Reynolds, who will graduate in April, said he had decided beforehand that he would create watercolors of landscapes. But on the way to the site, he kept noticing abandoned cars with grasslands sprouting from where the seats had once been. "People had deserted these cars with the intention of coming back," he said, adding that some Rock River residents abandon houses in the same fashion.

Reynolds' explorations took him to the local dump, which was heaped with piles of rusted junk. One of his exhibition pieces is a mobile made of hubcaps, a rusted license plate, and large railroad spikes. When touched, the rusty pieces of metal clink against one another and evoke a surprisingly delicate tinkling sound, like glass chimes.

The fourth student, Ben Danforth, created what he calls a "highly symbolic" body of work using ink and gouache on paper. What surprised him the most was how well he functioned with no distractions.

"Students in a BA program rarely have time to think solely about artwork and reflect on its development," said Danforth, who graduated last month from the School of Arts & Sciences.



Untitled
by Nickolas Reynolds

Below:
In the Distance
by Ellyn Womelsdorf



"Having nothing to focus on but one's work was an enormously beneficial experience."

Danforth says he was inspired by the grand scale of things, and that the enormous Wyoming sky helped him put in perspective his own existence in the world.

"It was amazing to watch the students struggle with their sense of time, place, and landscape in relation to their own work," said Jenkins, who managed to carve out a side trip to Denver, where the students visited galleries, an art museum, and two of her artist friends who work out of studios in the Colorado mountains.

On the ranch, the students hiked together and individually. They crawled over boulders, explored an alley where a night-hawk had taken up residence in an abandoned house, and watched a golden eagle soar into flight right in front of them. Each student kept a journal; in fact, every word of Womelsdorf's journal was recopied to form the backdrop for one of her large pieces in the exhibition.

Jenkins called the Studio Arts Wyoming Field Study a "microcosm of graduate school," not unlike a Master of Fine Arts program. "It was a dedicated round-the-clock studio space with a community of peers engaged in similar work," she said. "The students had a sense of purpose rooted in curiosity, experimentation, and creative problem solving."

Most of the art and paleontology students have kept in touch with one another since last year's adventure.

"My roommate out in Wyoming is now my roommate here in Pittsburgh," smiled Womelsdorf.

Arts and Culture

PITT ARTS Sets Feb. 4 as PSO Russia Night for Pitt Community

If the cold weather and snow are making you think of Russia, there is a warmer alternative.

The Pittsburgh Symphony Orchestra (PSO), PITT ARTS, and Pitt's Center for Russian and East European Studies (REES) are sponsoring a Pitt Russia Night at Heinz Hall, 600 Penn Ave., Downtown.

The event is part of the two-week Tchaikovsky Festival, which runs Feb. 2-12.

Russian pianist Denis Matsuev will return to Heinz Hall at 8 p.m. Feb. 4 during the festival's opening weekend. Two years ago, Matsuev received a rave reception from Pittsburgh audiences for his critically acclaimed performances of Rachmaninoff's *Third Piano Concerto*.

The program for next month's concert, which will be conducted by Gianandrea Noseda, includes Tchaikovsky's *Piano Concerto No. 1* with Matsuev as soloist; the rarely performed love scene—based on themes from Tchaikovsky's famous *Romeo and Juliet Fantasy-Overture*—that was realized from Tchaikovsky's sketches after his death by his student Sergey Taneyev as a 13-minute work for soprano, tenor, and orchestra; and Tchaikovsky's orchestral work *Francesca da Rimini*. Soprano Danielle Pastin and tenor James Flora will sing in the *Romeo and Juliet* love scene; excerpts from Shakespeare's *Romeo and Juliet*

and Dante's *The Divine Comedy* will be performed by actors Sara Trapnell, Ryan Melia, and Anthony McKay.

Members of the Pitt community who purchase their tickets through the PITT ARTS program will be treated to a free postconcert dessert in Heinz Hall's Grand Tier Lounge and an opportunity to meet the artists.

PITT ARTS tickets for Russia Night with the PSO are \$15 (Gallery), \$20 (Family Circle), or \$28 (Main Floor) and are available through PITT ARTS, www.pittarts.pitt.edu, 412-624-4498.

The Tchaikovsky Festival includes events featuring film, poetry, theater, chamber music, and solo piano performances in addition to two weekends of PSO concerts dedicated to the composer.

As part of the festival, Pitt's REES, Department of Music, and Film Studies Program will present a daylong Tchaikovsky Symposium at Bellefield Hall from 10:30 a.m. to 5 p.m. Feb. 5. It is free and open to the public, but requires advance registration by phoning 412-392-4828. For more information on the symposium, including the complete schedule, contact Phil Thompson in the Department of Music at concerts@pitt.edu. For more about the PSO's Tchaikovsky Festival, contact PITT ARTS.



Tchaikovsky

Awards & More



had served as associate vice president for development, acting vice president for university relations, and director of corporate and foundation relations.

Robert Stein, assistant director of the Small Business Development Center in the Joseph M. Katz Graduate School of Business' Institute for Entrepreneurial Excellence (IEE), was named a Microsoft Most Valuable Professional for the eighth consecutive year. The MVP award is given to technical community leaders who share their expertise and provide feedback to help people enhance their use of technology. A nationally renowned innovator and advisor in the technology industry, Stein is also the manager of the Information Technology Program at IEE.

Lynn Iams Barger has been named executive director of Institutional Advancement at the University of Pittsburgh at Johnstown. Barger was selected following a national search. Previously, she was employed by Indiana University of Pennsylvania where she



Lynn Iams Barger

Margaret Smith, a professor in Pitt's School of Education whose expertise is mathematics education, was recently appointed the editor of the *Mathematics Teacher Educator*. The publication is a joint venture between the Association of Mathematics Teacher Educators and the National Council of Teachers of Mathematics.

PITT ARTS Moves to Permanent Offices in 907 William Pitt Union

After almost seven months in a temporary space on the third floor of the William Pitt Union (WPU), PITT ARTS now has a permanent address and newly renovated offices. The program's space in 907 WPU features a large main office with ample room for the PITT ARTS Program's three fulltime staff, work-study students, and student hosts; a lounge where Pitt faculty, staff, and students can fill out their Cheap Seats forms; and a work area to assemble the program's large interoffice mailings. And here's the renovation finale: a custom-designed entryway resembling a theater,



complete with columns.

PITT ARTS has been connecting students on the Pittsburgh campus in Oakland to the cultural life of Pittsburgh since the arts organization was founded in 1997. Funded by the Office of the Provost, the program sponsors more than 110 free student outings for Pitt undergraduates each year. PITT ARTS also provides on-campus art experiences as well as discounted cultural opportunities for faculty, staff, and undergraduate and graduate students. Additional information is available at www.pittarts.pitt.edu and 412-624-4498. —By Annabelle Clippinger

Bookshelf

GSPIA Professor Louise Comfort Writes Book on Resilience

Louise K. Comfort, a professor and director of the Center for Disaster Management in Pitt's Graduate School of Public and International Affairs (GSPIA), is coauthor of the recently published book *Designing Resilience* (University of Pittsburgh Press, 2010).

Coedited by Arjen Boin, adjunct professor in the Public Administration Institute of Louisiana State University, and Chris C. Demchak, associate professor in the School of Public Administration and Policy at the University of Arizona, Tucson, *Designing Resilience* presents case studies of extreme events. The authors analyze the affected citizens and systems management of such large-scale disasters as Hurricane Katrina in the United States and the 2005 London subway bombings in the United Kingdom.

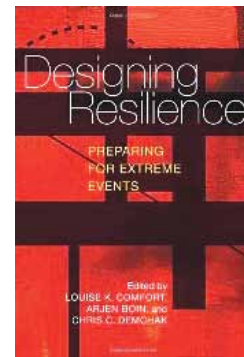
The book outlines elements critical to effective disaster management: quality of response, capacity to improvise, proper coordination, and survival

skills, among others. Its examples provide guidance to other nations and states in assessing their own disaster-management systems and what needs to be changed to achieve resilience.

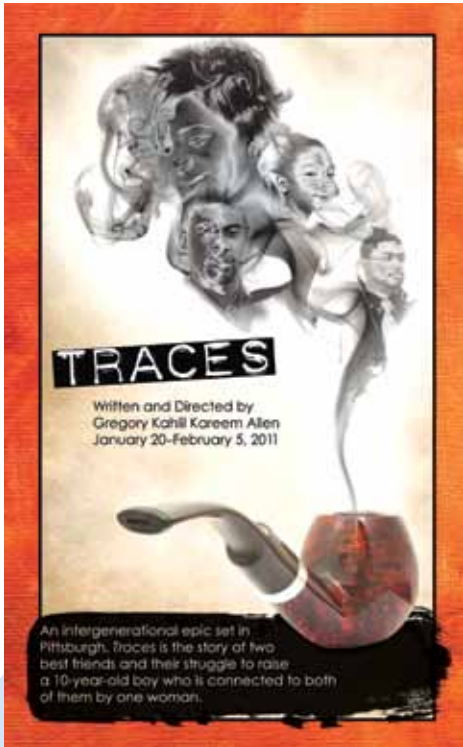
Comfort has written extensively on disaster response management, including "Asymmetric Information Processes in Extreme Events: The 26 December 2004 Sumatran Earthquake and Tsunami" in *Communicable Crises: Prevention, Response and Recovery in the Global Arena* (Information Age Publishing, 2007) and "Communication, Coherence, and Collective Action: The Impact of Hurricane Katrina on Communications Infrastructure" in *Public Works Management and Policy* (Sage, 2006).

Renowned for her expertise in emergency management and response, Comfort is also recognized as an authority in organizational theory, innovation and behavior, and information technology policy and management.

—Amanda Leff Ritchie



January



Traces, Kuntu Repertory Theatre, through February 5

24

Nonsense by Dan Goggin, popular musical from the 1980s, through April 17, CLO Cabaret, 719 Liberty Ave., Downtown, 412-281-3973, www.pittsburghclo.org, PITT ARTS Cheap Seats, 412-392-4900, www.pittarts.pitt.edu.

The Art of Structure, through Feb. 6; **Andre Kertesz: On Reading**, through Feb. 13; **Ordinary Madness: James Lee Byars**, through Feb. 20; **Past Meets Present: Decorative Arts and Design**, ongoing; Carnegie Museum of Art, 4400 Forbes Ave., Oakland, 412-622-3131, www.cmoa.org.

Queloides: Race and Racism in Cuban Contemporary Art, exhibition featuring 12 artists renowned for their critical work on issues of race, discrimination, and identity; curated by Alejandro de la Fuente, UCIS research professor of history and Latin American studies, through Feb. 27, Mattress Factory, 500 Sampsonia Way, North Side, Pitt's University Center for International Studies, Center for Latin American Studies, 412-322-2231, www.mattress.org.

Beat 'Em Bucs—The Story of the 1960 Pittsburgh Pirates, through January; **Memories of Mario**, through Feb. 13; **Angels of Mercy: Sisters in Healthcare in Western Pennsylvania**, through May 1; **Pittsburgh: A Tradition of Innovation**, ongoing; Heinz History Center, 1212 Smallman St., Strip District, 412-454-6000, www.heinzhistorycenter.org.

Traces, written and directed by Gregory Kahilil Kareem Allen, through Feb. 5, Kuntu Repertory Theatre, 7th-Floor Auditorium,

Alumni Hall, Pitt's Kuntu Repertory Theatre, 412-624-8498, www.kuntu.org.

Camelot by Alan Jay Lerner and Frederick Loewe, tale about the courage of King Arthur, the beauty of Guinevere, and the chivalry of Sir Lancelot, through Feb. 20, Pittsburgh Public Theater, 621 Penn Ave., Downtown, 412-316-1600, www.ppt.org, PITT ARTS Cheap Seats, 412-392-4900, www.pittarts.pitt.edu.

Marcus; or the Secret of Sweet by Tarell Alvin McCraney, companion play to City Theatre's 2008 hit **The Brothers Size**, through Feb. 13, City Theatre, 1300 Bingham St., South Side, 412-431-2489, www.citytheatre-company.org.

Menahem Pressler, distinguished pianist performing Beethoven, Debussy, and Schubert, 7:30 p.m., Bellefield Hall Auditorium, Bellefield Hall Recital Series, Pittsburgh Chamber Music Society, 412-624-4129, www.pittsburghchambermusic.org.

26

Bound (Andy and Lana Wachowski, 1996), free film screening, 7:45 p.m., 3415 Posvar Hall, Contemporary Queer Cinemas Public Film Series Spring 2011, Pitt Women's Studies Program, 412-624-6485, www.wstudies.pitt.edu.

27

Rinaldo by George Frideric Handel, also Jan. 29, Feb. 1, 4, and 6, CAPA Theater, Ft. Duquesne Boulevard and 9th Street, Downtown, Pittsburgh Opera, 412-456-6666, www.pittsburghopera.org.

Cats, popular musical by Andrew Lloyd Weber inspired by T.S. Eliot's poetry, through Feb. 6, Byham Theater, 101 Sixth Ave., Downtown, Pittsburgh Musical Theatre, 412-456-6666, www.pittsburghmusicals.com, PITT ARTS Cheap Seats, 412-392-4900, www.pittarts.pitt.edu.

28

Jay Hitt, songwriter, arranger, and performer, noon, free, The Cup & Chaucer Café, ground floor, Hillman Library, Emerging Legends Concert Series Spring 2011, Pitt University Library System, Calliope: The Pittsburgh Folk Music Society, www.calliopehouse.org.

Mozart's **Symphony No. 40** and Sibelius' **Symphony No. 5** with conductor Arild Remmereit, and, in Haydn's **Concerto No. 1**, violinist Viviane Hagner, 8 p.m., also Jan. 30, Heinz Hall, 600 Penn Ave., Downtown, Pittsburgh Symphony Orchestra, BNY Mellon Grand Classics, 412-392-4900, www.pittsburghsymphony.org, PITT ARTS Cheap Seats, 412-392-4900, www.pittarts.pitt.edu.

Utopia by Rachel Harrison, Ordinary Madness, Carnegie Museum of Art, through February 20

29

Music on the Edge: Third Coast Percussion, 8 p.m., Carnegie Library Lecture Hall, 4400 Forbes Ave., Oakland, Pitt Department of Music, Andy Warhol Museum, Carnegie Museum of Art, 412-624-4125, www.music.pitt.edu.

31

"The Intractable Career of James Crow III," Robert Hill, Pitt vice chancellor for public Affairs, noon, School of Social Work Conference Center, 20th floor, Cathedral of Learning, Reed Smith Spring 2011

Haydn's Concerto No. 1, Violinist Viviane Hagner, Heinz Hall, January 28 and 30

February

1

"Low Theory: Losing Hope and Finding Nemo," colloquium, Judith Halberstam, Pitt Humanities Center fellow, 12:30 p.m., 602 Cathedral of Learning, Pitt Humanities Center, Pitt's Women's Studies, 412-624-6485, www.wstudies.pitt.edu.

2

"The Future of Queer Studies," open forum for undergraduates, Judith Halberstam, Pitt Humanities Center fellow, 4 p.m., 602 Cathedral of Learning, Pitt Humanities Center, Pitt's Women's Studies, 412-624-6485, www.wstudies.pitt.edu.

Tchaikovsky Festival Recital: Music and Melancholy, Richard Kogan, lecture and solo piano performance, 7:30 p.m., Levy Hall at Rodef Shalom Temple, 4905 Fifth Ave., Oakland, www.Pittsburghsymphony.org.

University of Pittsburgh Symphony Orchestra, performing Saint-Saëns' **Violin Concerto No. 3** with soloist Rebecca Theophanous and Debussy's **Prelude to the Afternoon of a Faun**, 8 p.m., Bellefield Hall Auditorium, Pitt Department of Music, 412-624-4125, www.music.pitt.edu.

The Well of Horniness by Holly Hughes, directed by Jeremy Enz-Doerschner, and **Authorial Intent** by Itamar Moses, directed by Allison Coldeway, Pitt Repertory Student Lab double feature, Feb. 2-6 and 11-13, Studio Theatre, Cathedral of Learning, Pitt Repertory Theatre, Department of Theatre Arts, 412-624-6568, www.play.pitt.edu.

3

"Dude, Where's My Phallus?: Forgetting, Losing, Looping," discussion with Judith Halberstam, Pitt Humanities Center fellow, 4 p.m., 602 Cathedral of Learning, Pitt Humanities Center, Pitt's Women's Studies, 412-624-6485, www.wstudies.pitt.edu.

"Teahouse, Brothel, and Street Corner: Venues and Songs of a Hong Kong Blind Singer," Bell Yung, Pitt professor of music, noon, 4130 Posvar Hall, Asia Over Lunch Series, Pitt Asian

Speaker Series, Pitt Center on Race and Social Problems, 412-624-7382, swwww.crsp.pitt.edu.

"The Queer Art of Failure," lecture by Judith Halberstam, Pitt Humanities Center fellow, 5 p.m., Ballroom B, University Club, Pitt Humanities Center, Pitt's Women's Studies, 412-624-6485, www.wstudies.pitt.edu.



Cats, Byham Theater, through February 6



Pitt Humanities Center Fellow Judith Halberstam, Cathedral of Learning, February 1-4

Studies Center, 412-648-7370, asia@pitt.edu.

Tchaikovsky Festival Recital: The Virtuoso Tchaikovsky, solo piano performances and **Souvenir de Florence** string sextet, 7:30 p.m., Kresge Recital Hall, Carnegie Mellon University, College of Fine Arts Bldg., 5000 Forbes Ave., www.pittsburghsymphony.org.

4

The Moonlighters, old-time Appalachian and roots music, noon, free, The Cup & Chaucer Café, ground floor, Hillman Library, Emerging Legends Concert Series Spring 2011, Pitt University Library System, Calliope: The Pittsburgh Folk Music Society, www.calliopehouse.org.

"Transgressors in a Global Frame," public lecture with Judith Halberstam, Pitt Humanities Center fellow, 2 p.m., 602 Cathedral of Learning, Pitt Humanities Center, Pitt's Women's Studies, 412-624-6485, www.wstudies.pitt.edu.

Music on the Edge: Cellist Dave Eggar, 8 p.m., Bellefield Hall Auditorium, Pitt Department of Music, 412-624-4125, www.music.pitt.edu.

Matsuev Plays Tchaikovsky, Pitt Russian Night with conductor Gianandrea Noseda and pianist Denis Matsuev, 8 p.m., also Feb. 5-6, Heinz Hall, 600 Penn Ave., Downtown, Pittsburgh Symphony Orchestra, BNY Mellon Grand

Classics, 412-392-4900, www.pittsburghsymphony.org, PITT ARTS Cheap Seats for Feb. 4, 412-392-4900, www.pittarts.pitt.edu.

5

Paul Thek: Diver, A Retrospective, exhibition, through May 1, Carnegie Museum of Art, 4400 Forbes Ave., Oakland, 412-622-3131, www.cmoa.org.

Storied Past: Four Centuries of French Drawings From the Blanton Museum of Art, exhibition featuring more than 60 drawings produced over a 400-year period, through April 17, Frick Art Museum, Frick Art & Historical Center, 7227 Reynolds St., Point Breeze, 412-371-0600, www.frickart.org.

Tchaikovsky Festival: "Tchaikovsky the Man" Screening and Conference, with screening of Ken Russell's **The Music Lovers** (1970) and performance of **Piano Trio in A Minor**, 10:30 a.m. to 5 p.m., Pitt's Bellefield Hall, advance registration for free event at 412-392-4828, www.pittsburghsymphony.org.

8

Tchaikovsky Festival Recital: Tchaikovsky and His Circle, featuring works by Taneyev, Arensky, and Pabst, 7:30 p.m., Bellefield Hall, Pittsburgh Symphony Orchestra, BNY Mellon Grand Classics, 412-392-4900, www.pittsburghsymphony.org, PITT ARTS Cheap Seats, 412-392-4900, www.pittarts.pitt.edu.

9

Fire (Deepa Mehta 1996), free film screening, 7:45 p.m., 3415 Posvar Hall, Contemporary Queer Cinemas Public Film Series Spring 2011, Pitt Women's Studies Program, 412-624-6485, www.wstudies.pitt.edu.

10

Tchaikovsky Festival: The Poetic Tchaikovsky, works for solo piano and for voice and piano, 7:30 p.m., Duquesne University's PNC Recital Hall, Mary Pappert School of Music, 600 Forbes Ave., www.pittsburghsymphony.org.

Arts and Culture

February

"An Update on Korean Studies Resources at the University of Pittsburgh," Xiuying Zou, public services librarian, Pitt East Asian Library, and Ho Nam Choi, principle researcher, Korean Institute of Science and Technology Information, noon, 4130 Posvar Hall, Asia Over Lunch Series, Pitt Asian Studies Center, 412-648-7370, asia@pitt.edu.

Tchaikovsky Festival Finale, with conductor Manfred Honeck and violinist Serge Zimmerman, 1:30 p.m., also Feb. 11-12, Heinz Hall, 600 Penn Ave., Downtown, Pittsburgh Symphony Orchestra, BNY Mellon Grand Classics, 412-392-4900, www.pittsburghsymphony.org, PITT ARTS Cheap Seats, 412-392-4900, www.pittarts.pitt.edu.

11 Dracula, set to music by Franz Liszt, through Feb. 13, Benedum Center, 803 Liberty Ave., Downtown, Pittsburgh Ballet Theatre, 412-456-6666, www.pbt.org, PITT ARTS Cheap Seats, 412-392-4900, www.pittarts.pitt.edu.

America's Best Weekly: A Century of The Pittsburgh Courier, through Oct. 2, Heinz History Center, 1212 Smallman St., Strip District, 412-454-6000, www.heinzhistorycenter.org.

12 Tango Fire, production traces history of tango, 8 p.m., Byham Theater, 101 Sixth Ave., Downtown, Pittsburgh Dance Council, www.pgharts.org, 412-456-6666, PITT ARTS Cheap Seats, 412-392-4900, www.pittarts.pitt.edu.

Jazz & Baseball, special event highlighting the historical connection between the music and the sport, through Feb. 13, Manchester Craftsmen's Guild Hall, 1815 Metropolitan St., Manchester, MCG Jazz, 412-322-0800, www.mcgjazz.org, PITT ARTS Cheap Seats, 412-624-4498, www.pittarts.pitt.edu.

13 Heinz Chapel Choir Chamber Choir Festival, free, 3 p.m., Heinz Chapel, Pitt Department of Music, 412-624-4125, www.music.pitt.edu.

15 Hair, New York Public Theater's new Tony-winning production, through Feb. 17, Heinz Hall, 600 Penn Ave., Downtown, PNC Broadway Across America, www.pgharts.org, 412-456-6666, PITT ARTS Cheap Seats, 412-392-4900, www.pittarts.pitt.edu.

17 "Audible Traces: Documenting Indian Prisoners of War in World War I Europe," Neepa Majumdar, Pitt professor of English, noon, 4130 Posvar Hall, Asia Over Lunch Series, Pitt Asian Studies Center, 412-648-7370, asia@pitt.edu.

18 Churchill in Short(s)? Tommy Costello directing three lesser-known yet thoroughly contemporary one-act plays by Caryl Churchill, through Feb. 27, Henry Heymann Theater in the Stephen Foster Memorial, Pitt Repertory Theatre, Department of Theatre Arts, 412-624-6568, www.play.pitt.edu.

Manhattan Transfer, Grammy Award-winning vocal quartet, 7 p.m. and 9:30 p.m., Manchester Crafts-



Music on the Edge: Clarinetist Jean Kopperud and Percussionist Tom Kolor, Andy Warhol Museum, February 19

men's Guild Hall, 1815 Metropolitan St., Manchester, MCG Jazz, 412-322-0800, www.mcgjazz.org.

Juan and John, created and performed by Roger Guenveur Smith, also Feb. 19, August Wilson Center, 980 Liberty Ave., Downtown, 412-456-6666, www.augustwilsoncenter.org, PITT ARTS Cheap Seats, 412-392-4900, www.pittarts.pitt.edu.

19 Music on the Edge: Clarinetist Jean Kopperud and Percussionist Tom Kolor, 8 p.m., Andy Warhol Museum, 117 Sandusky St., North Side, Pitt Department of Music, Andy Warhol Museum, 412-624-4125, www.music.pitt.edu.

Voices of Music: An Evening with Bach, program highlighting the genius of J.S. Bach's lyrical musical invention, including *Air on the G String*, 8 p.m.,



Tchaikovsky Festival, Pittsburgh Symphony Orchestra, February 2-12

Synod Hall, Fifth Avenue and North Craig Street, Oakland, Renaissance & Baroque, 412-361-2048, www.rbsp.org, PITT ARTS Cheap Seats, 412-624-4498, www.pittarts.pitt.edu.

24 "Edo Era Robots?!" The Art of Karakuri-ningyo, Armen Bakalian, Pitt graduate student in East Asian studies, noon, 4130 Posvar Hall, Asia Over

Lunch Series, Pitt Asian Studies Center, 412-648-7370, asia@pitt.edu.

Mahalia Jackson: Standing on Holy Ground, written and directed by Vernell A. Lillie, through March 12, 7th-Floor Auditorium, Alumni Hall, Pitt's Kuntu Repertory Theatre, 412-624-8498, www.kuntu.org.

"Edo Era Robots?!" The Art of Karakuri-ningyo, Armen Bakalian, Pitt graduate student in East Asian studies, noon, 4130 Posvar Hall, Asia Over Lunch Series, Pitt Asian Studies Center, 412-648-7370, asia@pitt.edu.

25 Honeck Conducts Beethoven Masterpieces, with pianist Lars Vogt in *Concerto No. 1*, 8 p.m., also Feb. 26-27, Heinz Hall, 600 Penn Ave., Downtown, Pittsburgh Symphony Orchestra, BNY Mellon Grand Classics, 412-392-4900, www.pittsburghsymphony.org, PITT ARTS Cheap Seats, 412-392-4900, www.pittarts.pitt.edu.

26 Andrew Avinoff: In Pursuit of Beauty, exhibition, through June 5, Carnegie Museum of Art, 4400 Forbes Ave., Oakland, 412-622-3131, www.cmoa.org.



Heinz Chapel Choir Chamber Choir, Heinz Chapel, February 13

27 Benjamin Beilman, award-winning violinist performing Bach, Strauss, Carter, Tower, and Hubay, 7:30 p.m., Bellefield Hall Auditorium, Bellefield Hall Recital Series, Pittsburgh Chamber Music Society, 412-624-4129, www.pittsburghchambermusic.org.

Black Angels Over Tuskegee, Layon Gray's historical drama based on real-life experiences of Tuskegee Airmen—the celebrated African American air squadron during World War II, 4 p.m., also Feb. 28, Byham Theater, 101 Sixth Ave., Downtown, Pittsburgh Cultural Trust Guest Attraction, 412-456-6666, www.pgharts.org.

March

2 An Evening With Video Artist Monica Enriquez-Enriquez, free film screening and director's talk, 7-9 p.m., Kelly-Strayhorn Theater, 5941 Penn Ave., East Liberty, Contemporary Queer Cinemas Public Film Series Spring 2011, Pitt Women's Studies Program and Kelly-Strayhorn Theater, 412-624-6485, www.wstudies.pitt.edu.

University of Pittsburgh Symphony Orchestra, performing Rimsky-Korsakov's *Sheherazade*, 8 p.m., free, Bellefield Hall Auditorium, Pitt Department of Music, 412-624-4125, www.music.pitt.edu.

3 "The Real of the Real: Kyoto Vegetables and Discourses of Authenticity," Greg de St. Maurice, doctoral candidate, Pitt Department of Anthropology, noon, 4130 Posvar Hall, Asia Over Lunch Series, Pitt Asian Studies Center, 412-648-7370, asia@pitt.edu.

Tortelier & The Firebird, with conductor Yan Pascal Tortelier performing works by Stravinsky and Tower, and with violinist Nicola Benedetti, works by Chausson, and Ravel, 1:30 and 8 p.m., also March 4-5, Heinz Hall, 600 Penn Ave., Downtown, Pittsburgh Symphony Orchestra, BNY Mellon Grand Classics, 412-392-4900, www.pittsburghsymphony.org.

Circle Mirror Transformation by Annie Baker, how a beginner's drama workshop brings out unexpected truths, through April 3, Pittsburgh Public Theater, 621 Penn Ave., Downtown, 412-316-1600, www.ppt.org, PITT ARTS Cheap Seats, 412-392-4900, www.pittarts.pitt.edu.

4 T. Mitchell Bell, blues and bluegrass, noon, free, The Cup & Chaucer Café, ground floor, Hillman Library, Emerging Legends Concert Series Spring 2011, Pitt University Library System, Calliope: The Pittsburgh Folk Music Society, www.calliopehouse.org.

5 Music on the Edge: Entelechron/Music of John Cage, 8 p.m., Andy Warhol Museum, 117 Sandusky St., North Side, Pitt Department of Music, Andy Warhol Museum, 412-624-4125, www.music.pitt.edu.

BNY Mellon Jazz presents Hiromi, Japanese pianist and composer, 8 p.m., also March 6, BNY Mellon Jazz, Manchester Craftsmen's Guild Hall, 1815 Metropolitan St., Manchester, MCG Jazz, 412-322-0800, www.mcgjazz.org.

You Are Here: Architecture and Experience, exhibition, through May 29, Carnegie Museum of Art, 4400 Forbes Ave., Oakland, 412-622-3131, www.cmoa.org.

10 Marvin Does Marvin, showcase of Marvin Hamlisch's award-winning hits and his personal journey, through March 13, Heinz Hall, 600 Penn Ave., Downtown, Pittsburgh Symphony Orchestra, BNY Mellon Grand Classics, 412-392-4900, www.pittsburghsymphony.org.

11 Ragnar Kjartansson: Song, exhibition, through Sept. 25, Carnegie Museum of Art, 4400 Forbes Ave., Oakland, 412-622-3131, www.cmoa.org.



Music on the Edge: Newband, New Hazlett Theater, March 19

17 "Comparative Health Status of Women and Children in Indonesia, the Maldives, and Solomon Islands," Astri Ferdiana, doctoral candidate, Pitt Department of Epidemiology, noon, 4130 Posvar Hall, Asia Over Lunch Series, Pitt Asian Studies Center, 412-648-7370, asia@pitt.edu.

A Gershwin Fantasy, featuring Ann Hampton Callaway and her band, through March 20, Byham Theater, 101 Sixth Ave., Downtown, 412-456-6666, www.pbt.org, PITT ARTS Cheap Seats, 412-392-4900, www.pittarts.pitt.edu.

18 "Tribute Concert: A Symphonic Celebration of African American Culture," featuring soprano Angela Brown and conductor Thomas Hong, 7:30 p.m., Heinz Hall, 600 Penn Ave., Downtown, Pittsburgh Symphony Orchestra, BNY Mellon Grand Classics, 412-392-4900, www.pittsburghsymphony.org.

Marvin Does Marvin, Heinz Hall, March 10-13



12 Precious Little by Madeleine George, play about the beauty and limits of interpersonal communication, through April 3, City Theatre, 1300 Bingham St., South Side, 412-431-2489, www.citytheatrecompany.org.

13 Music on the Edge: counter-induction, 8 p.m., Andy Warhol Museum, 117 Sandusky St., North Side, Pitt Department of Music, Andy Warhol Museum, 412-624-4125, www.music.pitt.edu.

14 Trio Cavatina, award-winning chamber ensemble performing Pärt, Mendelssohn, and Beethoven, 7:30 p.m., Carnegie Music Hall, 4400 Forbes Ave., Oakland, Carnegie Music Hall Chamber Series, Pittsburgh Chamber Music Society, 412-624-4129, www.pittsburghchambermusic.org.

CALENDAR

M a r c h

19

Jane Monheit, Grammy-nominated jazz vocalist, 7 p.m. and 9:30 p.m., Manchester Craftsmen's Guild Hall, 1815 Metropolitan St., Manchester, MCG Jazz, 412-322-0800, www.mcgjazz.org.

Music on the Edge: Newband and the Harry Partch Instruments, 8 p.m., New Hazlett Theater, Allegheny Square East, North Side, Pitt Department of Music, Andy Warhol Museum, 412-624-4125, www.music.pitt.edu.

Ensemble Caprice: Salsa Baroque, unique blend of European polyphony and Mexican and Bolivian traditional music, 8 p.m., Synod Hall, Fifth Avenue and North Craig Street, Oakland, Renaissance & Baroque, 412-361-2048, www.rbsp.org, PITT ARTS Cheap Seats, 412-624-4498, www.pittarts.pitt.edu.

Lukasz Kupachewski, guitar performance, 8 p.m., PNC Recital Hall, Duquesne University School of Music, 600 Forbes Ave., Uptown, Guitar Society of Fine Art, 412-612-0499, www.gsfapittsburgh.org, PITT ARTS Cheap Seats, 412-624-4498, www.pittarts.pitt.edu.

23

Bad Education (Pedro Almodovar 2004), free film showing, 7:45 p.m., 3415 Posvar Hall, Contemporary Queer Cinemas Public Film Series Spring 2011, Pitt Women's Studies Program, 412-624-6485, www.wstudies.pitt.edu.

24

"High Returns, Low Aspirations? Social Norms and Education in Village India," Annemie Maertens, Pitt assistant professor of international affairs, noon, 4130 Posvar Hall, Asia Over Lunch Series, Pitt Asian Studies Center, 412-648-7370, asia@pitt.edu.

Black Nature: Four Centuries of African American Nature Poetry, reading, 7 p.m., August Wilson Center for African American Culture, 980 Liberty Ave., Downtown, Pittsburgh Contemporary Writers Series, Pitt Department of English, Book Center, University of Pittsburgh Press, 412-624-6508, www.creativewriting.pitt.edu.

25

Steve Weber and Phil Smith, acoustic blues and folk music by two Pitt professors, noon, free, The Cup & Chaucer Café, ground floor, Hillman Library, Emerging Legends Concert Series Spring 2011, Pitt University Library System, Calliope: The Pittsburgh Folk Music Society, www.calliopehouse.org.

Black Nature: Four Centuries of African American Nature Poetry, discussion, 2 p.m., 501 Cathedral of Learning, Pittsburgh Contemporary Writers Series, Pitt Department of English, Book Center, University of Pittsburgh Press, 412-624-6508, www.english.pitt.edu.

Jeff Lorber, composer, producer, and keyboard legend, 7 p.m. and 9:30 p.m., Manchester Craftsmen's Guild Hall, 1815 Metropolitan St., Manchester, MCG Jazz, 412-322-0800, www.mcgjazz.org.

Sheherazade, with conductor Andris Nelson performing works by Rimsky-Korsakov and Mendelssohn, and with pianist Jonathan Biss, Beethoven's Concerto No. 2, 8 p.m., also March 27, Heinz Hall, 600 Penn Ave., Downtown, Pittsburgh Symphony Orchestra, BNY Mellon Grand Classics, 412-392-4900, www.pittsburghsymphony.org.

The Gospel at Colonus, conceived and adapted by Lee Breuer, music composed



Turandot, Benedum Center, March 26 and 27, April 1 and 3

Downtown, Opera Theater of Pittsburgh, 412-456-1390, www.operatheaterpittsburgh.org.

26

Turandot by Giacomo Puccini, also March 29 and April 1 and 3, Benedum Center, 803 Liberty Ave., Downtown, Pittsburgh Opera, 412-456-6666, www.pittsburghopera.org, PITT ARTS Cheap Seats, 412-392-4900, www.pittarts.pitt.edu.

28

IonSound Project: Pitt Graduate Composers Concert, free, 8 p.m., Bellefield Hall Auditorium, Pitt Department of Music, 412-624-4125, www.music.pitt.edu.

by Bob Telson, featuring the Mt. Ararat Music Ministry, through March 27, August Wilson Center, 980 Liberty Ave.,

A p r i l

1

As You Like It by William Shakespeare, directed by Sam Turich, through April 10, Charity Randall Theatre in Stephen Foster Memorial, Pitt Repertory Theatre, Department of Theatre Arts, 412-624-6568, www.play.pitt.edu.

African Music and Dance Ensemble, Pitt students free with ID, 8 p.m., Bellefield Hall Auditorium, Pitt Department of Music, 412-624-4125, www.music.pitt.edu.

Jeff Miller, guitar songwriter and performer, noon, free, The Cup & Chaucer Café, ground floor, Hillman Library, Emerging Legends Concert Series Spring 2011, Pitt University Library System, Calliope: The Pittsburgh Folk Music Society, www.calliopehouse.org.

Schumann & Richard Strauss, with conductor Rafael Frühbeck de Burgos and, in Liszt's Concerto No. 2, pianist Jorge Federico Osorio, 8 p.m.; also April 3, Heinz Hall, 600 Penn Ave., Downtown, Pittsburgh Symphony Orchestra, BNY Mellon Grand Classics, 412-392-4900, www.pittsburghsymphony.org.

2

Pitt Men's Glee Club, Pitt students free with ID, 8 p.m., First Baptist Church of Pittsburgh, 159 N. Bellefield Ave., Oakland, Pitt Department of Music, 412-624-4125, www.music.pitt.edu.

IonSound Project, performing Nathan Currier's *A Kafka Cantata*, 8 p.m., Bellefield Hall Auditorium, Pitt Department of Music, 412-624-4125, www.music.pitt.edu.



Indonesian Music Concert, Bellefield Hall, April 8 and 9

The Amish Project, written by and starring Jessica Dickey, based on the 2006 shooting at an Amish schoolhouse in Lancaster, Pa., through May 8, City Theatre, 1300 Bingham St., South Side, 412-431-2489, www.citytheatrecompany.org.

6

Let the Right One In (Tomas Alfredson, 2008), free film screening, 7:45 p.m., 3415 Posvar Hall, Contemporary Queer Cinemas Public Film Series Spring 2011, Pitt Women's Studies Program, 412-624-6485, www.wstudies.pitt.edu.

7

"The Khmer Rouge Tribunal: Justice vs. Impunity," Sopheada Phy, Heinz Fellow, noon, 4130 Posvar Hall, Asia Over Lunch Series, Pitt Asian Studies Center, 412-648-7370, asia@pitt.edu.

Brahms' Symphony No. 1 with conductor Herbert Blomstedt and, in Piano Concerto No. 1, soloist Garrick Ohlsson, 1:30 p.m., also April 8-9, Heinz Hall, 600 Penn Ave., Downtown, Pittsburgh Symphony Orchestra, BNY Mellon Grand Classics, 412-392-4900, www.pittsburghsymphony.org.

Lydia Davis, author, 8:30 p.m., Frick Fine Arts Auditorium, Pittsburgh Contemporary Writers Series, Pitt Department of English, Pitt Book Center, University of Pittsburgh Press, 412-624-6508, www.english.pitt.edu.

8

Sue Gartland and Jordan Umbach, members of Calliope Songwriters Circle, noon, free, The Cup & Chaucer Café, ground floor, Hillman Library, Emerging Legends Concert Series Spring 2011, Pitt University Library System, Calliope: The Pittsburgh Folk Music Society, www.calliopehouse.org.

Indonesian Music Concert, 8 p.m., also April 9, Bellefield Hall Auditorium, Pitt Department of Music, 412-624-4125, www.music.pitt.edu.

Heinz Chapel Choir Spring Concert, free, 3 p.m., Heinz Chapel, Pitt Department of Music, 412-624-4125, www.music.pitt.edu.

9

April in Paris, celebrating an 18th-century spring in Paris with Stephen

30

The Bubble (Eytan Fox, 2006), free film showing, 7:45 p.m., 3415 Posvar Hall, Contemporary Queer Cinemas Public Film Series Spring 2011, Pitt Women's Studies Program, 412-624-6485, www.wstudies.pitt.edu.

31

"Teaching and Learning English in China and Indonesia," Sara Bularzik, graduate student, Pitt Department of Education, noon, 4130 Posvar Hall, Asia Over Lunch Series, Pitt Asian Studies Center, 412-648-7370, asia@pitt.edu.



IonSound Project: Pitt Graduate Composers Concert, Bellefield Hall, March 28

15

Emily Rodgers, Pittsburgh-based singer and songwriter, noon, free, The Cup & Chaucer Café, ground floor, Hillman Library, Emerging Legends Concert Series Spring 2011, Pitt University Library System, Calliope: The Pittsburgh Folk Music Society, www.calliopehouse.org.

Carpathian Music Ensemble, Pitt students free with ID, 8 p.m., Bellefield Hall Auditorium, Pitt Department of Music, 412-624-4125, www.music.pitt.edu.

George Balanchine: Celebrating a Legend, Pittsburgh Ballet Theatre builds on its long-standing tradition of ballets by this Russian-born American master, through April 17, Benedum Center, 803 Liberty Ave., Downtown, 412-456-6666, www.pbt.org, PITT ARTS Cheap Seats, 412-392-4900, www.pittarts.pitt.edu.

16

Flamenco Completo: Marija Temo & Ulrika Frank, *Mano a Mano*, a collaborative showcase of flamenco, classical, and contemporary styles in guitar, singing, and dance, 8 p.m., Pittsburgh Center for the Arts, Simmons Hall, 6300 Fifth Ave., Shadyside, Guitar Society of Fine Art, 412-612-0499, www.gsfapittsburgh.org, PITT ARTS Cheap Seats, 412-624-4498, www.pittarts.pitt.edu.

17

Women's Choral Ensemble Spring Concert, free, 3 p.m., Heinz Chapel, Pitt Department of Music, 412-624-4125, www.music.pitt.edu.

28

Wynonna Judd With Marvin and the PSO, featuring Grammy Award-winning singer Judd, 7:30 p.m., Heinz Hall, 600 Penn Ave., Downtown, Pittsburgh Symphony Orchestra, BNY Mellon Grand Classics, 412-392-4900, www.pittsburghsymphony.org, PITT ARTS Cheap Seats, 412-392-4900, www.pittarts.pitt.edu.

The Marvelous Wonderettes by Roger Bean, a return to the '50s and '60s, through Oct. 2, CLO Cabaret, 719 Liberty Ave., Downtown, 412-281-3973, www.pittsburghclo.org, PITT ARTS Cheap Seats, 412-392-4900, www.pittarts.pitt.edu.

30

Dialogues of the Carmelites by Francis Poulenc, story of 16 Carmelite nuns who defended their faith and were executed during France's 18th-century Reign of Terror, 8 p.m., also May 3, 6, and 8, Benedum Center, 803 Liberty Avenue, Downtown, Pittsburgh Opera, 412-456-6666, www.pittsburghopera.org, PITT ARTS Cheap Seats, 412-392-4900, www.pittarts.pitt.edu.

Schultz, Chatham Baroque, and Andrew Appel, 8 p.m., Synod Hall, Fifth Avenue and North Craig Street, Oakland, Renaissance & Baroque, 412-361-2048, www.rbsp.org, PITT ARTS Cheap Seats, 412-624-4498, www.pittarts.pitt.edu.

11

Takács Quartet, Grammy Award-winning ensemble performing Haydn, Bartók, and Schubert, 7:30 p.m., Carnegie Music Hall, 4400 Forbes Ave., Oakland, Carnegie Music Hall Chamber Series, Pittsburgh Chamber Music Society, 412-624-4129, www.pittsburghchambermusic.org.

13

University of Pittsburgh Symphony Orchestra, free, performing Stravinsky's *Firebird Suite*, 8 p.m., Bellefield Hall Auditorium, Pitt Department of Music, 412-624-4125, www.music.pitt.edu.

Henna Night by Amy Rosenthal, directed by Jess Edelstein, and *Sparagmos*, based on Ian Johnston's translation of *The Bacchae*, directed by David Bisaha, choreographed by Ariel Nereson, April 13-17, Pitt Repertory Student Lab double feature, Studio Theatre, Cathedral of Learning, Pitt Repertory Theatre, Department of Theatre Arts, 412-624-6568, www.play.pitt.edu.

14

Disney in Concert, featuring musical scores, film clips, and artist performances from a variety of popular Disney films, through April 17, Heinz Hall, 600 Penn Ave., Downtown, Pittsburgh Symphony Orchestra, BNY Mellon Grand Classics, 412-392-4900, www.pittsburghsymphony.org.

Superior Donuts by Pulitzer Prize-winning playwright Tracy Letts, Chicago coffee shop serves as the setting for this new comedy, through May 15, Pittsburgh Public Theater, 621 Penn Ave., Downtown, 412-316-1600, www.ppt.org, PITT ARTS Cheap Seats, 412-392-4900, www.pittarts.pitt.edu.

Ben Franklin: In Search of a Better World, exhibition exploring personal side of one of our founding fathers, through July 31, Heinz History Center, 1212 Smallman St., Strip District, 412-454-6000, www.heinzhistorycenter.org.



Happenings

Elisabeth Nemeth, visiting fellow, Pitt Center for Philosophy of Science, 12:05 p.m. **Jan. 25**, 817R Cathedral of Learning, Lunchtime Talk Series, Pitt Center for Philosophy of Science, 412-624-1052, pittcntr@pitt.edu.

"Law and Politics: Should the UN Suspend the ICC Indictment Against Sudan's President?"

Charles C. Jalloh, assistant professor, Pitt School of Law, 12:30 p.m. **Jan. 26**, 3911 Posvar Hall, Ford Institute Speakers Series, Pitt European Studies Center, European Union Center of Excellence, Ford Institute for Human Security, 412-648-7434, www.fordinstitute.pitt.edu.

"Identifying the Molecular and Genetic Basis of Sudden Cardiac Death,"

Barry London, the Harry S. Tack Professor of Medicine and chief of the Division of Cardiology in Pitt's School of Medicine, 4:30 p.m. **Jan. 27**, 2500 Posvar Hall, Pitt Provost's Inaugural Lecture Series, www.pitt.edu.

"Tolerance and Its Borders: Citizen Responses to Civil Liberties Disputes in France, Belgium, and the Netherlands,"

Aaron Abbarno, doctoral candidate, Pitt Department of Political Science, noon **Jan. 27**, 4130 Posvar Hall, Pizza & Politics Lecture, Pitt European Studies Center, European Union Center of Excellence, 412-624-5404, tfa3@pitt.edu.

"Beyond Reduction vs. Autonomy in Psychology,"

David Danks, professor of philosophy, Carnegie Mellon University, 3:30 p.m. **Jan. 28**, 817R Cathedral of Learning, Annual Lecture Series, Pitt Center for Philosophy of Science, 412-624-1052, pittcntr@pitt.edu.

"The Intractable Career of James Crow III," Robert Hill, Pitt vice chancellor for public Affairs, noon **Jan. 31**, School of Social Work Conference Center, 20th Floor, Cathedral of

Learning. Reed Smith Spring 2011 Speaker Series, Pitt Center on Race and Social Problems, 412-624-7382, www.crsp.pitt.edu.

Miscellaneous

TIES Informational Luncheon for Researchers and Research Assistants, talk on Text Information Extraction System (TIES), Rebecca Crowley, director, Biomedical Informatics Graduate Training Program, Pitt School of Medicine, 11 a.m. **Jan. 26**, Cooper Conference, Room C, Hillman Cancer Center, open to Pitt and UPMC faculty, staff, and students, Pitt Department of Biomedical Informatics, 412-623-4753.

"The World-Historical Dataverse: A Work Plan in Programming," 3-4:30 p.m. **Jan. 27**, Information Sciences Seminar Room, 501 Information Sciences Building, Pitt World History Center Dataverse Design Seminar, www.worldhistory.pitt.edu, 412-624-3073.

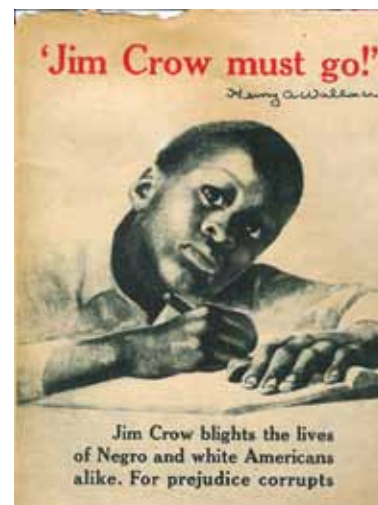
CIDDE CourseWeb Level 1 Workshop, instructions on Pitt's implementation of the Blackboard Learning Management System, 2-4 p.m. **Jan. 31**, B23 Alumni Hall, register online at www.cidde.pitt.edu.

Pitt PhD Dissertation Defenses

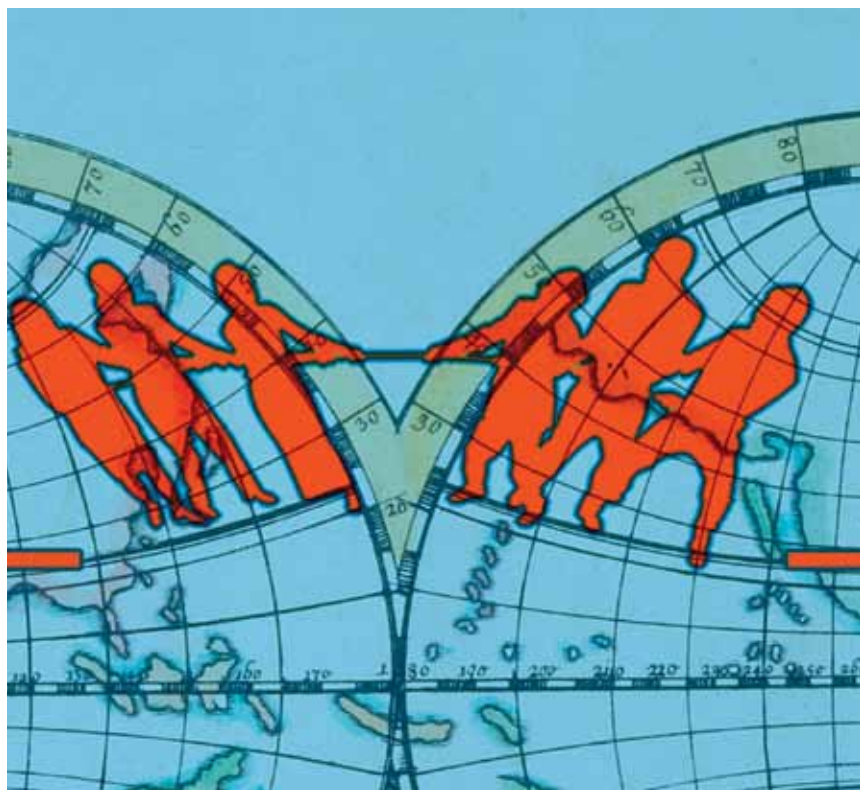
David Cram Helwich, School of Arts and Sciences Department of Communication, 1 p.m. **Jan. 24**, "Nuclear Weapons After the Cold War: Change and Continuity in Public Discourses," 1109B Cathedral of Learning.

Nitin Bhardwaj, Graduate School of Public Health's Department of Infectious Diseases and Microbiology, 2 p.m. **Jan. 26**, "Development of

Candidate Vaccine Strategies Against Rift Valley Fever Virus," G23 Parran Hall.



"The Intractable Career of James Crow III," Cathedral of Learning, January 31



"Tolerance and Its Borders: Citizen Responses to Civil Liberties Disputes in France, Belgium, and the Netherlands," Posvar Hall, January 27

Lectures/Seminars/Readings

"U.S. Implications of New Developments in European Private International Law," Volker Behr, professor, University of Augsburg (Germany), with comments by Ronald A. Brand, Chancellor Mark A. Nordenberg University Chair and professor, Pitt School of Law,

noon **Jan. 25**, Alcoa Room, Second Floor, Barco Law Building, Pitt Center for International Legal Education, 412-648-7023, cile@pitt.edu.

"Ernst Mach's 'Method of Variation' in Otto Neurath's Economic Theory,"

PUBLICATION NOTICE The next edition of *Pitt Chronicle* will be published Jan. 31. Items for publication in the newspaper's *Happenings* calendar (see this page) should be received at least two weeks prior to the event date. *Happenings* items should include the following information: title of the event, name and title of speaker(s), date, time, location, sponsor(s), and a phone number and Web site for additional information. Items may be e-mailed to chron@pitt.edu, faxed to 412-624-4895, or sent by campus mail to 422 Craig Hall. For more information, call 412-624-1033 or e-mail robinet@pitt.edu.